

certificate ID
2BM30

Organics 1400mg

7USC1639 Certificate of Analysis

LOT# 22C0161011

issue date 2/17/22 12:01 PM

This Product Has Been Tested and Complies with 7USC1639o(1)

Stillwater Laboratories

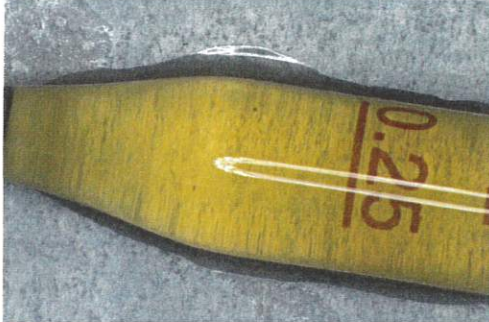
13142
order

total cannabinoids per mL
58.1 mg

total THC‡ ND
total CBD‡ 53.5mg

Incoming Inspection MSP-7.5.1.2

DESCRIPTION: Tincture sample received 2/15/2022 2:44:22 PM in a client-labeled bottle, by commercial courier per Method 7.3.1.1. and as described in the Montana METRC Lab User Guide. Labeled LOT.



- caryophyllene 
- humulene 
- terpinolene 
- ocimene 
- beta pinene 
- alpha pinene 
- limonene 
- myrcene 
- linalool 

SECURITY FEATURE: WATERMARK MUST MATCH CERTIFICATE ID AND ISSUE DATE

Potency	MSP-7.5.1.4	per mL	LOD	LOQ	error
total cannabinoids		58.1mg	0.08	0.24	±1.22mg
total THC‡		ND	0.08	0.24	±0.24mg
total THC (THC+THCa)		ND	0.08	0.24	±0.24mg
total CBD‡		53.5mg	0.08	0.24	±1.15mg
total CBD (CBD+CBDA)		53.5mg	0.08	0.24	±1.15mg
tetrahydrocannabinol (THCa)		ND	0.08	0.24	±0.24mg
Δ9-tetrahydrocannabinol (Δ9 THC)		ND	0.08	0.23	±0.23mg
Δ8-tetrahydrocannabinol (Δ8 THC)*		ND	0.10	0.30	±0.30mg
tetrahydrocannabivarin (THCv)		ND	0.08	0.25	±0.25mg
cannabidiolic acid (CBDA)		ND	0.07	0.21	±0.21mg
cannabidiol (CBD)		53.5mg	0.08	0.24	±1.15mg
cannabidivarin (CBDv)		<LOQ	0.08	0.24	±0.24mg
cannabigerolic acid (CBGA)		ND	0.07	0.21	±0.21mg
cannabigerol (CBG)		1.2mg	0.02	0.07	±0.09mg
cannabinol (CBN)		1.9mg	0.04	0.13	±0.16mg
cannabichromene (CBC)		1.3mg	0.08	0.24	±0.26mg

Terpenes	MSP-7.5.1.6	LOD	LOQ	error
total terpenes	ND	0.0007	0.0020	±0.0020%
linalool	ND	<0.0010	0.0009	±0.0009%
β-myrcene	ND	0.0007	0.0021	±0.0021%
D-limonene	ND	<0.0010	0.0013	±0.0013%
α-pinene	ND	<0.0010	0.0008	±0.0008%
β-pinene	ND	0.0006	0.0018	±0.0018%
ocimene	ND	0.0012	0.0036	±0.0036%
terpinolene	ND	0.0009	0.0026	±0.0026%
α-humulene	ND	0.0006	0.0017	±0.0017%
β-caryophyllene	ND	0.0016	0.0049	±0.0049%
α-bisabolol	ND	0.0013	0.0039	±0.0039%
camphene	ND	0.0007	0.0022	±0.0022%
Δ3-carene	ND	0.0032	0.0096	±0.0096%
caryophyllene oxide	ND	0.0021	0.0062	±0.0062%
para-cymene	ND	0.0122	0.0365	±0.0365%
eucalyptol	ND	0.0017	0.0051	±0.0051%
geraniol	ND	0.0051	0.0152	±0.0152%
guaial	ND	0.0016	0.0049	±0.0049%
isopulegol	ND	0.0016	0.0048	±0.0048%
cis-nerolidol	ND	0.0027	0.0082	±0.0082%
trans-nerolidol	ND	0.0014	0.0041	±0.0041%
α-terpinene	ND	0.0008	0.0025	±0.0025%

Pass / Fail Criteria

Microbial (Plating) MSP-7.5.1.10

FAIL: no failures
PASS: E.coli, Salmonella sp., molds

Mycotoxins MSP-7.5.1.8

FAIL: no failures
PASS: Ochratoxin A, Aflatoxin B1B2G1G2, Aflatoxin B1, Aflatoxin B2, Aflatoxin G1.
Moisture MSP-7.5.1.3

not required / not requested

Metals MSP-7.5.1.7

FAIL: no failures
PASS: Arsenic, Cadmium, Lead, Mercury

Pesticides MSP-7.5.1.8

FAIL: no failures
PASS: Abamectin, Acephate, Acequinocyl, Bifenazate, Bifenthrin, Cyfluthrin, Daminozide, Etoxazole, Fenoxycarb, Imazalil, Imidacloprid, Myclobutanil, Paclobutrazol, Piperonylbutoxide, Pyrethrin, Spinosad, Spiromesifen, Spirotetramat, Trifloxystrobin

Solvents MSP-7.5.1.7

FAIL: no failures
PASS: Acetone, Acetonitrile, Benzene, Butane, Chloroform, Cyclohexane, Ethanol, Heptane, Hexane, Isopropyl alcohol, Methanol, Pentane, Propane, Toluene, Xylenes

Analysis Location: L-00001

Certified by:



https://customer.a2la.org/index.cfm?event=directory_detail&labPID=423635B2-5128-4C6F-871A-419DCF43B0D7

Stillwater Laboratories Inc.

MT License L0001, L00007, L00010
6073 US93N Suite 5, Olney MT 59927
1408 Unit 4 Gold Ave. Bozeman MT 59715
Ph 406-881-2019. www.stwllabs.com

These results are only valid for the samples tested. • Potency (cannabinoid concentration) is calculated as: [cannabinoid] = [cannabinoid]_{HPLC} x volume_{dilution} / m_{dry}. • Decarboxyted cannabinoid concentration is calculated XXX_{total} = 0.877 x XXX_a + XXX ... Standards are used to calibrate the resulting data and estimate error using a standard estimate of error method; LOD is the limit of detection (3.3s), LOQ is the limit of quantification (3xLOD), and experimental error is calculated from weighing, dilution, and interpolation error using the formula s_g² = Σ (df/di)² s_i² where i is the contributor to error. The 95% confidence range is calculated from: (concentration) ± t_{CL90} x s_g. Sampling error is not considered in error calculations. ND = not detected (< LOD), NT = not tested, NL = no limit, NA = not applicable. ‡ = decarbed, * = analyte is off-scope.

certificate ID
2BM30

Corganics 1400mg
LOT# 22C0161011

ANALYTICAL DATA

Stillwater
Laboratories

Report Version: 1
Analysis Location: L-00001

order **13142**
rec'd date **2/15/2022 2:44:22 PM**
13142
issue date **2/17/2022 12:01:03 PM**
order

Methods and Instruments

MSP-7.3.1.1	BAL-05	2/15/2022	MSP-7.5.1.7	QP2020/HS20	2/16/2022	L-00001
MSP-7.5.1.2	YSC HD801m12	2/16/2022	MSP-7.5.1.8	LCMS8060	2/16/2022	L-00001
MSP-7.5.1.3	6MOC63u	2/16/2022	MSP-7.5.1.8	LCMS8060	2/16/2022	L-00001
MSP-7.5.1.4	LC-2030C	2/16/2022	MSP-7.5.1.10A	Hardy Diag	2/16/2022	L-00001
MSP-7.5.1.6	QP2020/HS20	2/16/2022	MSP-7.5.1.11	ICPMS2030	2/16/2022	L-00001

Mycotoxins

MSP-7.5.1.8	limit	LOD	LOQ	error	result	
Ochratoxin A	ND	20 ppb	0.3	1.0	±0.8 ppb	PASS
Aflatoxin B1B2G1G2	ND	20 ppb	0.3	1.0	±0.8 ppb	PASS

Microbial (Plating)

MSP-7.5.1.10	limit	LOD	LOQ	error	result	
E.coli	ND	0CFU	0.0	1.0	±0.1 CFU	PASS
Salmonella sp.	ND	0CFU	0.0	1.0	±0.1 CFU	PASS
molds	ND	10000CFU	1.9	5.7	±5.7 CFU	PASS

Solvents

MSP-7.5.1.7	limit	LOD	LOQ	error	result	
Acetone	ND	5000 ppm	0.6	1.7	±1.7 ppm	PASS
Acetonitrile	ND	410 ppm	0.5	1.5	±1.5 ppm	PASS
Benzene	ND	0 ppm	0.0	1.0	±0.1 ppm	PASS
Butane	ND	5000 ppm	1.2	3.5	±3.5 ppm	PASS
Chloroform	ND	0 ppm	0.1	0.2	±0.2 ppm	PASS
Cyclohexane	ND	0 ppm	0.4	1.3	±1.3 ppm	PASS
Ethanol	ND	10000 ppm	0.6	1.8	±1.8 ppm	PASS
Heptane	ND	5000 ppm	0.3	1.0	±1.0 ppm	PASS
Hexane	ND	290 ppm	0.4	1.3	±1.3 ppm	PASS
Isopropyl alcohol	ND	5000 ppm	0.5	1.6	±1.6 ppm	PASS
Methanol	ND	3000 ppm	0.4	1.3	±1.3 ppm	PASS
Pentane	ND	5000 ppm	0.2	0.5	±0.5 ppm	PASS
Propane	ND	5000 ppm	0.4	1.3	±1.3 ppm	PASS
Toluene	ND	890 ppm	0.3	1.0	±0.8 ppm	PASS
Xylenes	ND	2170 ppm	0.3	1.0	±0.8 ppm	PASS

Metals

MSP-7.5.1.7	limit	LOD	LOQ	error	result	
Arsenic	ND	1500 ppb	7.8	23.4	±23.4 ppt	PASS
Cadmium	ND	500 ppb	8.4	25.2	±25.2 ppt	PASS
Lead	ND	500 ppb	13.1	39.2	±39.2 ppt	PASS
Mercury	ND	300 ppb	6.6	19.7	±19.7 ppt	PASS

These results are only valid for the samples tested. • Standards are used to calibrate the resulting data and estimate error using a standard estimate of error method; LOD is the limit of detection (3.3s_d), LOQ is the limit of quantification (3xLOD), and experimental error is calculated from weighing, dilution, and interpolation error using the formula s_y² = Σ(∂f/∂i)²s_i² where i is the contributor to error. The 95% confidence range is calculated from: (concentration) ± t_{CL90} x s_y. Sampling error is not considered in error calculations. ND = not detected (< LOD), NT = not tested, NL = no limit, NA = not applicable.

Pesticides

MSP-7.5.1.8	limit	LOD	LOQ	error	result	
Abamectin	ND	0.30 ppm	0.005	0.014	±0.014 ppm	PASS
Acephate	ND	5.00 ppm	0.005	0.015	±0.015 ppm	PASS
Acequinocyl	ND	4.00 ppm	0.004	0.012	±0.012 ppm	PASS
Acetamiprid	NT	5.00 ppm				NA
Aldicarb	NT	0.00 ppm				NA
Azoxystrobin	NT	40.00 ppm				NA
Bifenazate	ND	5.00 ppm	0.001	0.003	±0.003 ppm	PASS
Bifenthrin	ND	0.50 ppm	0.001	0.002	±0.002 ppm	PASS
Boscalid	NT	10.00 ppm				NA
Carbaryl	NT	0.50 ppm				NA
Carbofuran	NT	0.00 ppm				NA
Chloanthraniliprole	NT	40.00 ppm				NA
Chlorfenapyr	NT	0.00 ppm				NA
Chlorpyrifos	NT	0.00 ppm				NA
Clofentezine	NT	0.50 ppm				NA
Coumaphos	NT	0.00 ppm				NA
Cyfluthrin	ND	1.00 ppm	0.005	0.015	±0.015 ppm	PASS
Cypermethrin	NT	1.00 ppm				NA
Daminozide	ND	0.00 ppm	0.018	0.055	±0.055 ppm	PASS
Dichlorvos	NT	0.00 ppm				NA
Diazinon	NT	0.20 ppm				NA
Dimethoate	NT	0.00 ppm				NA
Etoxazole	ND	1.50 ppm	0.002	0.007	±0.007 ppm	PASS
Fenoxycarb	ND	0.00 ppm	0.002	0.007	±0.007 ppm	PASS
Fenpyroximate	NT	2.00 ppm				NA
Fipronil	NT	0.00 ppm				NA
Flonicamid	NT	2.00 ppm				NA
Fludioxonil	NT	30.00 ppm				NA
Hexythiazox	NT	2.00 ppm				NA
Imazali	ND	0.00 ppm	0.004	0.013	±0.013 ppm	PASS
Imidacloprid	ND	3.00 ppm	0.001	0.002	±0.002 ppm	PASS
Malathion	NT	5.00 ppm				NA
Metaxalyl	NT	15.00 ppm				NA
Methiocarb	NT	0.00 ppm				NA
Methomyl	NT	0.10 ppm				NA
Methyl parathion	NT	0.00 ppm				NA
Mevinphos	NT	0.00 ppm				NA
Myclobutanil	ND	9.00 ppm	0.001	0.002	±0.002 ppm	PASS
Naled	NT	0.50 ppm				NA
Oxamyl	NT	0.20 ppm				NA
Paclobutrazol	ND	0.00 ppm	0.002	0.005	±0.005 ppm	PASS
Permethrin	NT	20.00 ppm				NA
Phosmet	NT	0.20 ppm				NA
Piperonylbutoxide	ND	8.00 ppm	0.007	0.020	±0.020 ppm	PASS
Prallethrin	NT	0.40 ppm				NA
Propiconazole	NT	20.00 ppm				NA
Propoxur	NT	0.00 ppm				NA
Pyrethrin	ND	1.00 ppm	0.002	0.005	±0.005 ppm	PASS
Pyridaben	NT	3.00 ppm				NA
Spinetoram	NT	3.00 ppm				NA
Spinosad	ND	3.00 ppm	0.004	0.013	±0.013 ppm	PASS
Spiromesifen	ND	12.00 ppm	0.002	0.006	±0.006 ppm	PASS
Spirotetramat	ND	13.00 ppm	0.002	0.005	±0.005 ppm	PASS
Spiroxamine	NT	0.00 ppm				NA
Tebuconazole	NT	2.00 ppm				NA
Thiacloprid	NT	0.10 ppm				NA
Thiamethoxam	NT	4.50 ppm				NA
Trifloxystrobin	ND	30.00 ppm	0.001	0.004	±0.004 ppm	PASS

SECURITY FEATURE: WATERMARK MUST MATCH CERTIFICATE ID AND ISSUE DATE

Certified by:



Stillwater Laboratories Inc.
MT License L0001, L00007, L00010
6073 US93N Suite 5, Olney MT 59927
1408 Unit 4 Gold Ave, Bozeman MT 59715
Ph 406-881-2019. www.stwlab.com